

PROFESSIONAL FUSION SPLICER KIT

F.O. FUSION BY ELECTRIC ARC

REF.	ART. NR.	DESCRIPTION	EAN 13
232103	OSSGN	F.O. KIT FUSION SPLICER	8424450183281



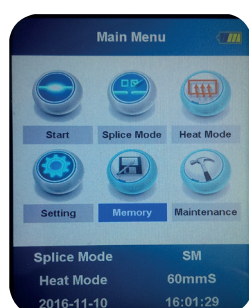
Professional fusion slicer which incorporate SIX alignment engines to work in different axis during the **electric arc fusion**. It makes a perfect **splice** within **8 seconds**. Its transport case has made with **high durability ABS**, also it can **be used as a work surface**.

- **Small weight and dimensions**, it includes all necessary accessories.
- Protection bumper made in high quality and density rubber which provide **high resistance to impacts**.
- Designed for **harsh environments** like strong winds, waterproof and adverse environmental conditions. Furthermore it prevents dust from the splicer area guaranteeing a **high quality process**.
- **User friendly and intuitive** interface.
- It **automatically detects problems** before the splice is done as it **measures the angles** in which fibre has been cut (maybe pointing at a fault with the cleaver) and **faults** with the fibre (usually dust).
- It will also **make sure the splice has been correctly done** by checking the spliced fibre by **pulling** and **measuring optical losses**.

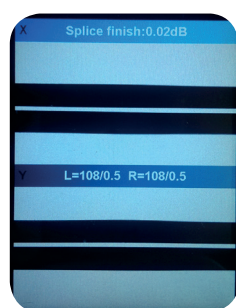


Furthermore, it offers:

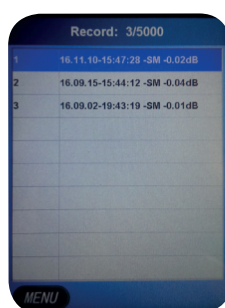
- Core alignment system.
- 360° protection. Dustproof, waterproof and impact protection.
- Starts the splicing process automatically once the cover is closed.
- Automatic splicing (8 seconds).
- Correct splice is guaranteed by a traction test.
- Discharge automatic calibration due to altitude and pressure changes.
- Manual calibration possibility due to the kind of fiber.
- When the tube is inserted, the oven closes automatically.
- Splice data and images were exported to a Datalog.
- Full load battery allows you to made more than 250 merges/firing. It allows you to keep working in charge mode.
- Each one of the high precision engines have a stepper condition with a permanently magnet and a reduction ratio box to provide maximum precision.
- 3.7" LCD channel (640x480).
- Long life battery (7800mAH) with charge display (service life between 300 and 500 load cycles).
- Activated ventilation by temperature sensor.
- Device automatic check via user menu.
- Dual pressing keys which reduce wear.
- Configurable ECO mode (standby and automatic shutdown).
- Automatic picture rotation according to the position of the screen.
- User friendly and intuitive.



MAIN MENU



FUSION RESULT



DATALOG



REF.	ART. NR.	mm	g	U./Packing
232103	OSSGN	136 x 160 x 164	6800	1/box



Reference / Art. Nr.		232103 / OSSGN	
General			
Average loss per splice	dB	0.02 @ single-mode fiber (SM) 0.01 @ multi-mode fiber (MM) 0.04 @ DS & NZDS fiber	
Average time per splice	s	8	
Average time for the heat-shrink sleeve heating	s	28	
Fusion programmes		11 (SM ,MM, NZ, DS and BIF) pre-configured 89 free	
Oven programmes		10 pre-configured 40 free	
Fibre alignment		3 AXIS Core X-Y-Z	
Screen		3.7" colour LCD, 640x480	
Lens magnification		Axis X+Axis Y=155 Axis X or Axis Y=310	
Languages		Spanish, English	
Electrodes life cycle	operations	4000 (aprox) 8000 (with replacement)	
Sensors			
Internal		Inner temperature, pressure, altitude and oven temperature	
Interfaces			
Mini USB		Upgrade and datalog download	
Powering			
Mains voltage	Vac	100 - 240	
Mains frequency	Hz	50 / 60	
Battery with level meter		Li-ION (11.1V and 7800mAh)	
Battery range	operations	250 (aprox) (splicing and heating)	
Operating range			
Operating temperature	°C	-10 ...+50	
Relative humidity	%	< 95%	
Working height	m	0 - 5000	
General			
Weight	Slicer	g	1800 (without battery)
	Battery		530
	Complete kit		6800 (with briefcase and accesories)
Dimensions (W x H x D)	mm	136 x 160 x 164	

FRONT VIEW



SPLICER AREA DETAIL



ACCOMMODATION SLOTS WORK AS A WORK SURFACE



Accessories included in the kit:

- New fiber cleaver with removable gatherer (cutter for 16,000 cuts)
- Pre-calibrated precision fiber stripper at 125, 250 and 900µm.
- 12V supply and car adapter. Car adapter allow to charge more devices thanks to the USB connector (5V, 2A)
- Handle and belt transport case.
- Slicer equipped with belt.
- Removable by user lithium battery.
- Isopropyl alcohol container with dispenser.
- Plastic clamp.
- Support to let the fiber protections cool down.
- Spare set of electrodes (2 units)
- Spare set of bolsters (2 units)
- Interchangeable head for pre-configured connectors fusion.



COMPLETE KIT